

Operator  
Telephone  
Fax  
e-Mail

---

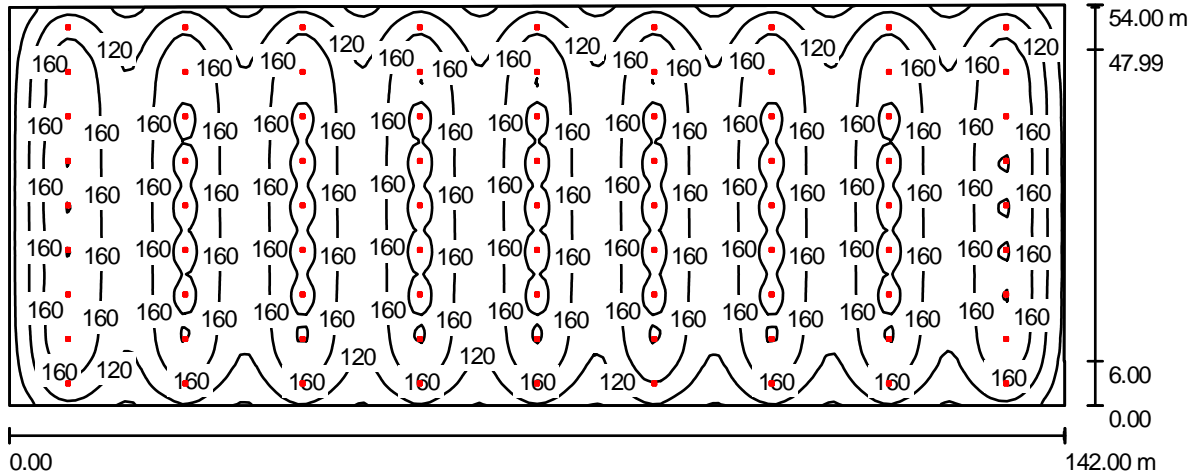
## 项目 1 / Luminaire parts list

---

81 Pieces	Shenzhen Sun-Light Technology Co., Ltd. HC-150 HC-150 Article No.: HC-150 Luminaire Luminous Flux: 19642 lm Luminaire Wattage: 152.2 W Luminaire classification according to CIE: 99 CIE flux code: 67 95 99 99 100 Fitting: 1 x HC-150 (Correction Factor 1.000).	See our luminaire catalog for an image of the luminaire.
-----------	--	--

Operator  
Telephone  
Fax  
e-Mail

**Building / Summary**



Height of Room: 9.400 m, Mounting Height: 9.400 m, Maintenance factor: 0.80

Values in Lux, Scale 1:1016

Surface	r [%]	$E_{av}$ [lx]	$E_{min}$ [lx]	$E_{max}$ [lx]	u0
Workplane	/	154	42	210	0.276
Floor	20	154	45	211	0.291
Ceiling	20	26	15	32	0.558
Walls (8)	20	51	11	195	/

**Workplane:**

Height: 0.000 m  
Grid: 128 x 128 Points  
Boundary Zone: 0.000 m

**Luminaire Parts List**

No.	Pieces	Designation (Correction Factor)	F [lm]	P [W]
1	81	Shenzhen Sun-Light Technology Co., Ltd. HC-150 HC-150 (1.000)	19642	152.2
Total:			1590986	12328.2

Specific connected load:  $1.61 \text{ W/m}^2 = 1.05 \text{ W/m}^2/100 \text{ lx}$  (Ground area:  $7642.52 \text{ m}^2$ )

Operator  
Telephone  
Fax  
e-Mail

---

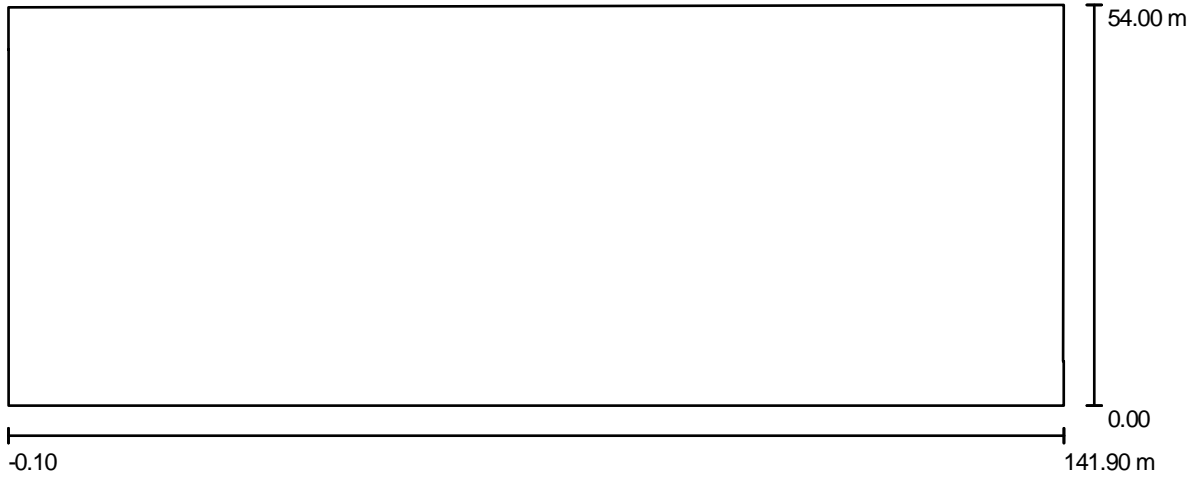
## Building / Luminaire parts list

---

81 Pieces	Shenzhen Sun-Light Technology Co., Ltd. HC-150 HC-150 Article No.: HC-150 Luminaire Luminous Flux: 19642 lm Luminaire Wattage: 152.2 W Luminaire classification according to CIE: 99 CIE flux code: 67 95 99 99 100 Fitting: 1 x HC-150 (Correction Factor 1.000).	See our luminaire catalog for an image of the luminaire.
-----------	--	--

Operator  
Telephone  
Fax  
e-Mail

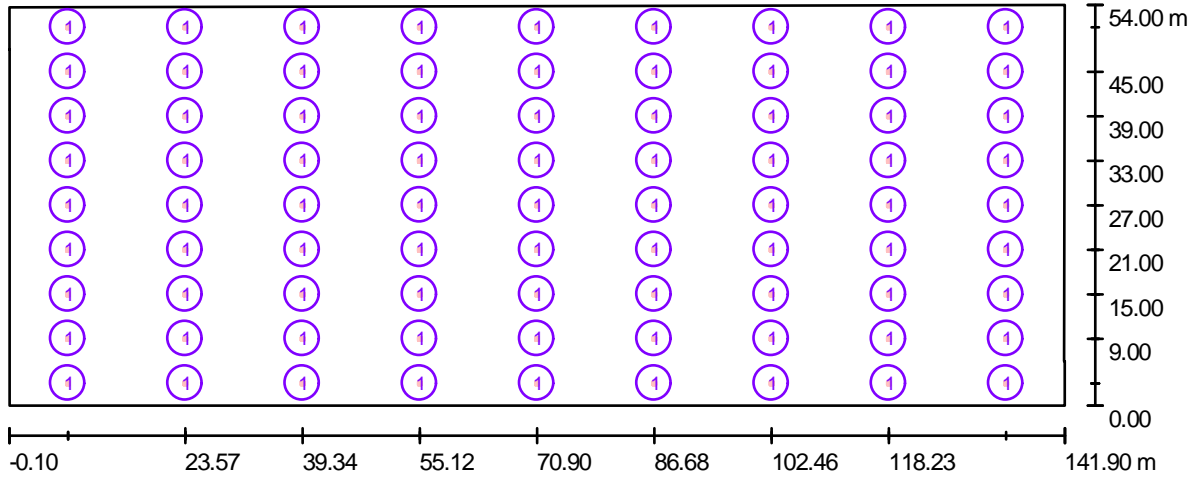
**Building / Floor plan**



Scale 1 : 1016

Operator  
Telephone  
Fax  
e-Mail

**Building / Luminaires (layout plan)**



Scale 1 : 1016

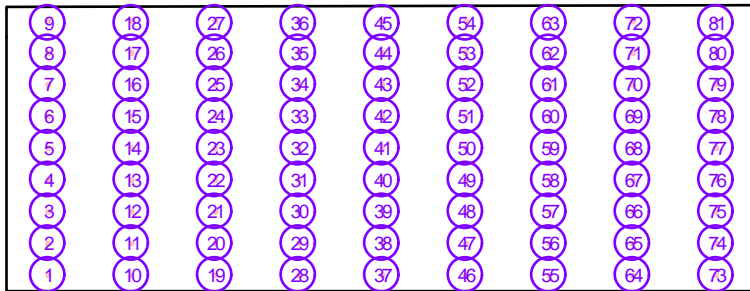
**Luminaire Parts List**

No.	Pieces	Designation
1	81	Shenzhen Sun-Light Technology Co., Ltd. HC-150 HC-150

Operator  
Telephone  
Fax  
e-Mail

## Building / Luminaires (coordinates list)

**Shenzhen Sun-Light Technology Co., Ltd. HC-150 HC-150**  
19642 lm, 152.2 W, 1 x 1 x HC-150 (Correction Factor 1.000).



No.	Position [m]			Rotation [°]		
	X	Y	Z	X	Y	Z
1	7.789	3.000	9.400	0.0	0.0	90.0
2	7.789	9.000	9.400	0.0	0.0	90.0
3	7.789	15.000	9.400	0.0	0.0	90.0
4	7.789	21.000	9.400	0.0	0.0	90.0
5	7.789	27.000	9.400	0.0	0.0	90.0
6	7.789	33.000	9.400	0.0	0.0	90.0
7	7.789	39.000	9.400	0.0	0.0	90.0
8	7.789	45.000	9.400	0.0	0.0	90.0
9	7.789	51.000	9.400	0.0	0.0	90.0
10	23.567	3.000	9.400	0.0	0.0	90.0
11	23.567	9.000	9.400	0.0	0.0	90.0
12	23.567	15.000	9.400	0.0	0.0	90.0
13	23.567	21.000	9.400	0.0	0.0	90.0
14	23.567	27.000	9.400	0.0	0.0	90.0
15	23.567	33.000	9.400	0.0	0.0	90.0
16	23.567	39.000	9.400	0.0	0.0	90.0
17	23.567	45.000	9.400	0.0	0.0	90.0
18	23.567	51.000	9.400	0.0	0.0	90.0
19	39.344	3.000	9.400	0.0	0.0	90.0
20	39.344	9.000	9.400	0.0	0.0	90.0
21	39.344	15.000	9.400	0.0	0.0	90.0
22	39.344	21.000	9.400	0.0	0.0	90.0
23	39.344	27.000	9.400	0.0	0.0	90.0
24	39.344	33.000	9.400	0.0	0.0	90.0
25	39.344	39.000	9.400	0.0	0.0	90.0
26	39.344	45.000	9.400	0.0	0.0	90.0
27	39.344	51.000	9.400	0.0	0.0	90.0
28	55.122	3.000	9.400	0.0	0.0	90.0

Operator  
Telephone  
Fax  
e-Mail

### Building / Luminaires (coordinates list)

No.	Position [m]			Rotation [°]		
	X	Y	Z	X	Y	Z
29	55.122	9.000	9.400	0.0	0.0	90.0
30	55.122	15.000	9.400	0.0	0.0	90.0
31	55.122	21.000	9.400	0.0	0.0	90.0
32	55.122	27.000	9.400	0.0	0.0	90.0
33	55.122	33.000	9.400	0.0	0.0	90.0
34	55.122	39.000	9.400	0.0	0.0	90.0
35	55.122	45.000	9.400	0.0	0.0	90.0
36	55.122	51.000	9.400	0.0	0.0	90.0
37	70.900	3.000	9.400	0.0	0.0	90.0
38	70.900	9.000	9.400	0.0	0.0	90.0
39	70.900	15.000	9.400	0.0	0.0	90.0
40	70.900	21.000	9.400	0.0	0.0	90.0
41	70.900	27.000	9.400	0.0	0.0	90.0
42	70.900	33.000	9.400	0.0	0.0	90.0
43	70.900	39.000	9.400	0.0	0.0	90.0
44	70.900	45.000	9.400	0.0	0.0	90.0
45	70.900	51.000	9.400	0.0	0.0	90.0
46	86.678	3.000	9.400	0.0	0.0	90.0
47	86.678	9.000	9.400	0.0	0.0	90.0
48	86.678	15.000	9.400	0.0	0.0	90.0
49	86.678	21.000	9.400	0.0	0.0	90.0
50	86.678	27.000	9.400	0.0	0.0	90.0
51	86.678	33.000	9.400	0.0	0.0	90.0
52	86.678	39.000	9.400	0.0	0.0	90.0
53	86.678	45.000	9.400	0.0	0.0	90.0
54	86.678	51.000	9.400	0.0	0.0	90.0
55	102.456	3.000	9.400	0.0	0.0	90.0
56	102.456	9.000	9.400	0.0	0.0	90.0
57	102.456	15.000	9.400	0.0	0.0	90.0
58	102.456	21.000	9.400	0.0	0.0	90.0
59	102.456	27.000	9.400	0.0	0.0	90.0
60	102.456	33.000	9.400	0.0	0.0	90.0
61	102.456	39.000	9.400	0.0	0.0	90.0
62	102.456	45.000	9.400	0.0	0.0	90.0
63	102.456	51.000	9.400	0.0	0.0	90.0
64	118.233	3.000	9.400	0.0	0.0	90.0
65	118.233	9.000	9.400	0.0	0.0	90.0
66	118.233	15.000	9.400	0.0	0.0	90.0

Operator  
Telephone  
Fax  
e-Mail

**Building / Luminaires (coordinates list)**

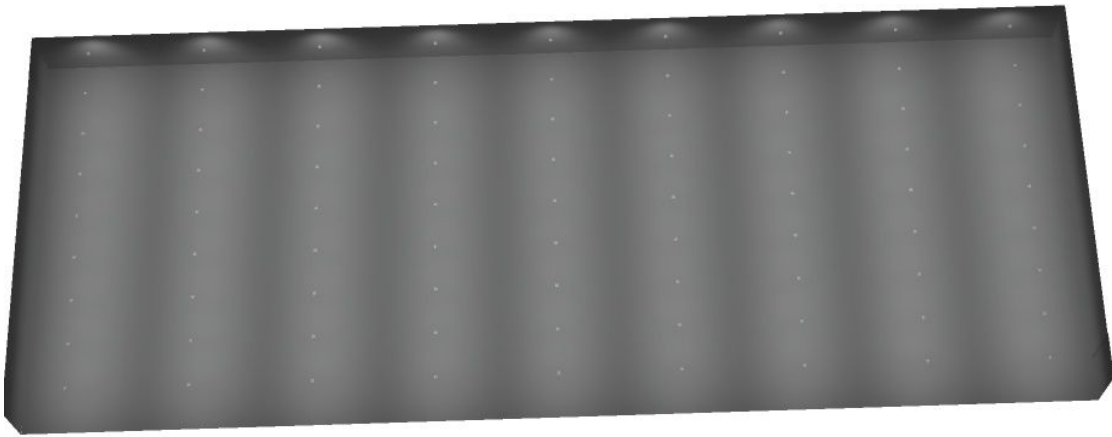
No.	Position [m]			Rotation [°]		
	X	Y	Z	X	Y	Z
67	118.233	21.000	9.400	0.0	0.0	90.0
68	118.233	27.000	9.400	0.0	0.0	90.0
69	118.233	33.000	9.400	0.0	0.0	90.0
70	118.233	39.000	9.400	0.0	0.0	90.0
71	118.233	45.000	9.400	0.0	0.0	90.0
72	118.233	51.000	9.400	0.0	0.0	90.0
73	134.011	3.000	9.400	0.0	0.0	90.0
74	134.011	9.000	9.400	0.0	0.0	90.0
75	134.011	15.000	9.400	0.0	0.0	90.0
76	134.011	21.000	9.400	0.0	0.0	90.0
77	134.011	27.000	9.400	0.0	0.0	90.0
78	134.011	33.000	9.400	0.0	0.0	90.0
79	134.011	39.000	9.400	0.0	0.0	90.0
80	134.011	45.000	9.400	0.0	0.0	90.0
81	134.011	51.000	9.400	0.0	0.0	90.0



Operator  
Telephone  
Fax  
e-Mail

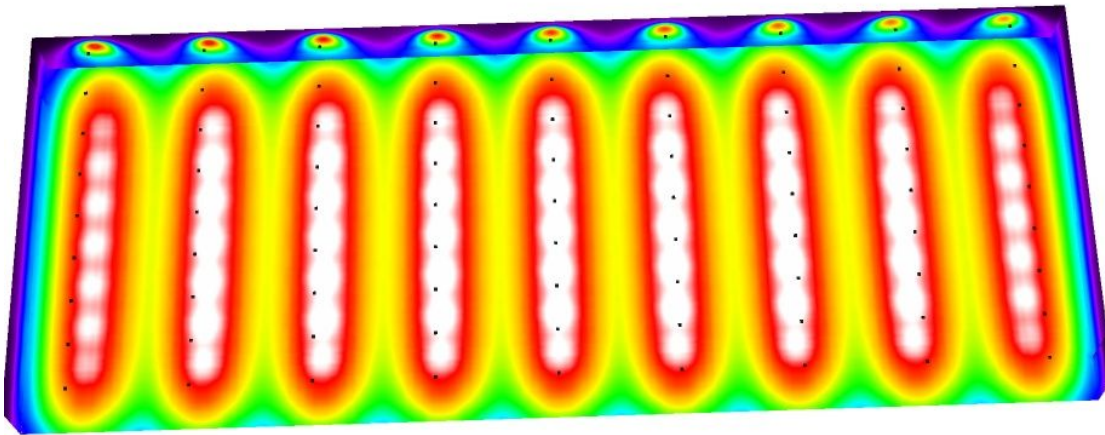
**Building / 3D Rendering**

---



Operator  
Telephone  
Fax  
e-Mail

**Building / False Colour Rendering**

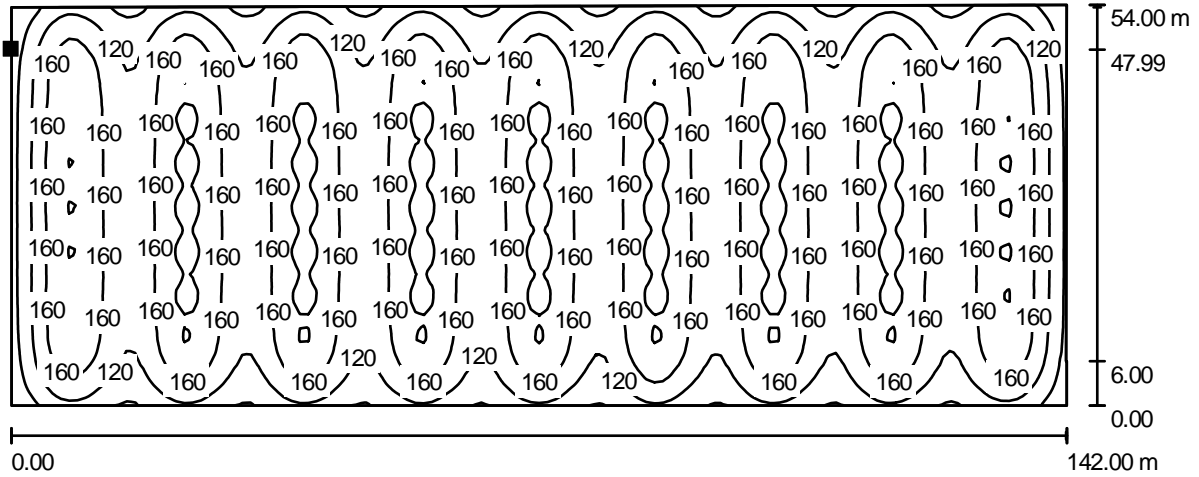


8      30      50      80      100      130      150      180      200

lx

Operator  
Telephone  
Fax  
e-Mail

**Building / Floor / Isolines (E)**



Values in Lux, Scale 1 : 1016

Position of surface in room:  
Marked point:  
(-0.081 m, 47.991 m, 0.000 m)

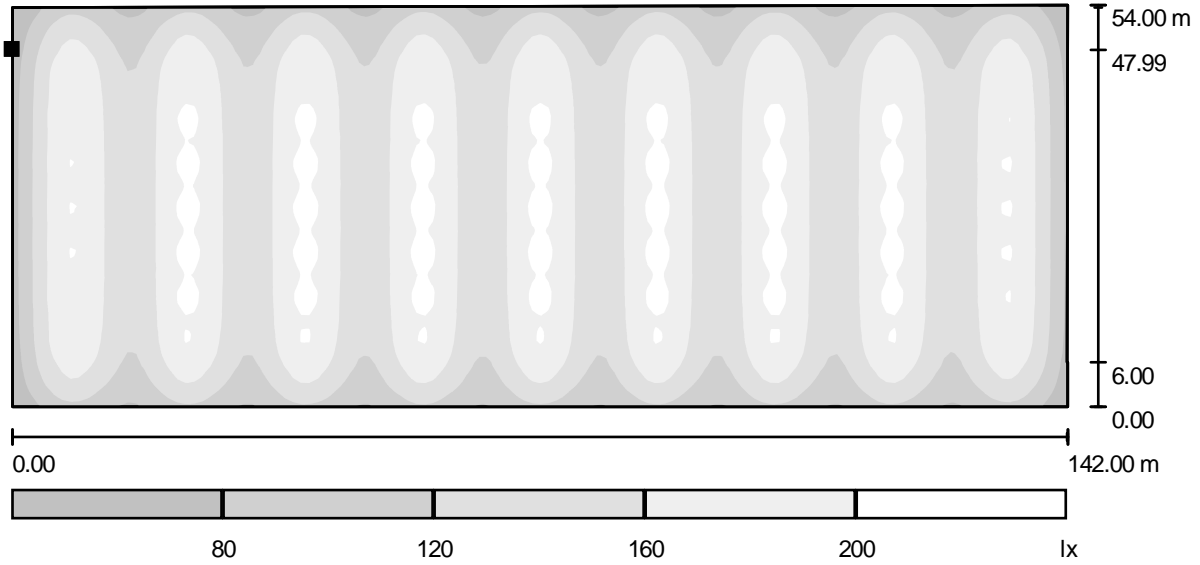


Grid: 128 x 128 Points

$E_{av}$ [lx]	$E_{min}$ [lx]	$E_{max}$ [lx]	u0	$E_{min} / E_{max}$
154	45	211	0.291	0.212

Operator  
Telephone  
Fax  
e-Mail

## Building / Floor / Greyscale (E)



Scale 1 : 1016

Position of surface in room:  
Marked point:  
(-0.081 m, 47.991 m, 0.000 m)



Grid: 128 x 128 Points

$E_{av}$  [lx]  
154

$E_{min}$  [lx]  
45

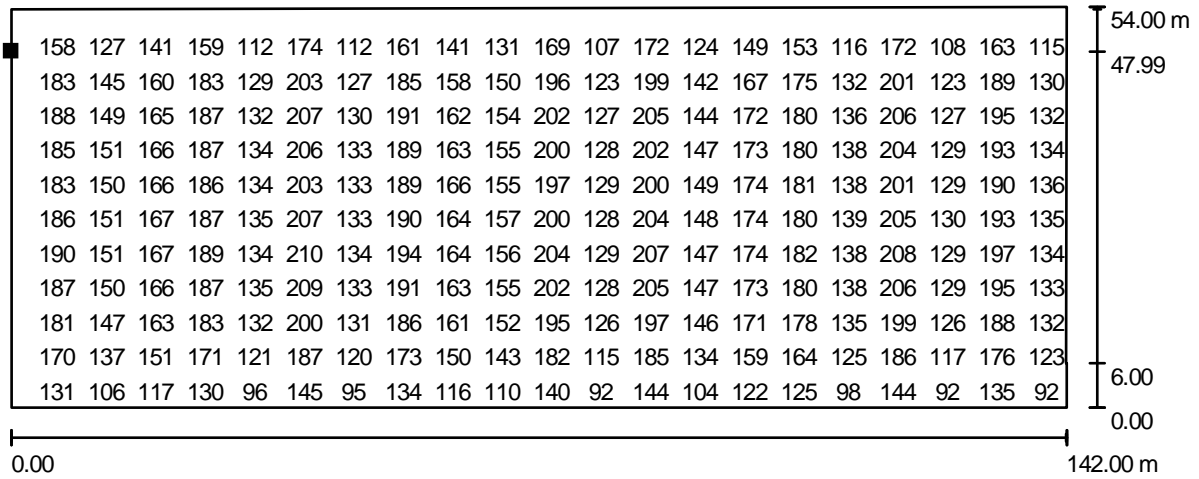
$E_{max}$  [lx]  
211

u0  
0.291

$E_{min} / E_{max}$   
0.212

Operator  
Telephone  
Fax  
e-Mail

**Building / Floor / Value Chart (E)**



Values in Lux, Scale 1 : 1016

Not all calculated values could be displayed.

Position of surface in room:  
Marked point:  
(-0.081 m, 47.991 m, 0.000 m)



Grid: 128 x 128 Points

$E_{av}$ [lx]	$E_{min}$ [lx]	$E_{max}$ [lx]	u0	$E_{min} / E_{max}$
154	45	211	0.291	0.212