

Project 5

Partner for Contact:
Order No.:
Company:
Customer No.:

Date: 06.06.2016
Operator:

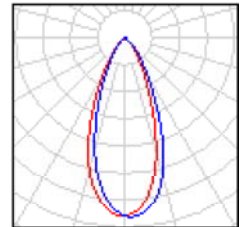


Operator
Telephone
Fax
e-Mail

Project 5 / Luminaire parts list

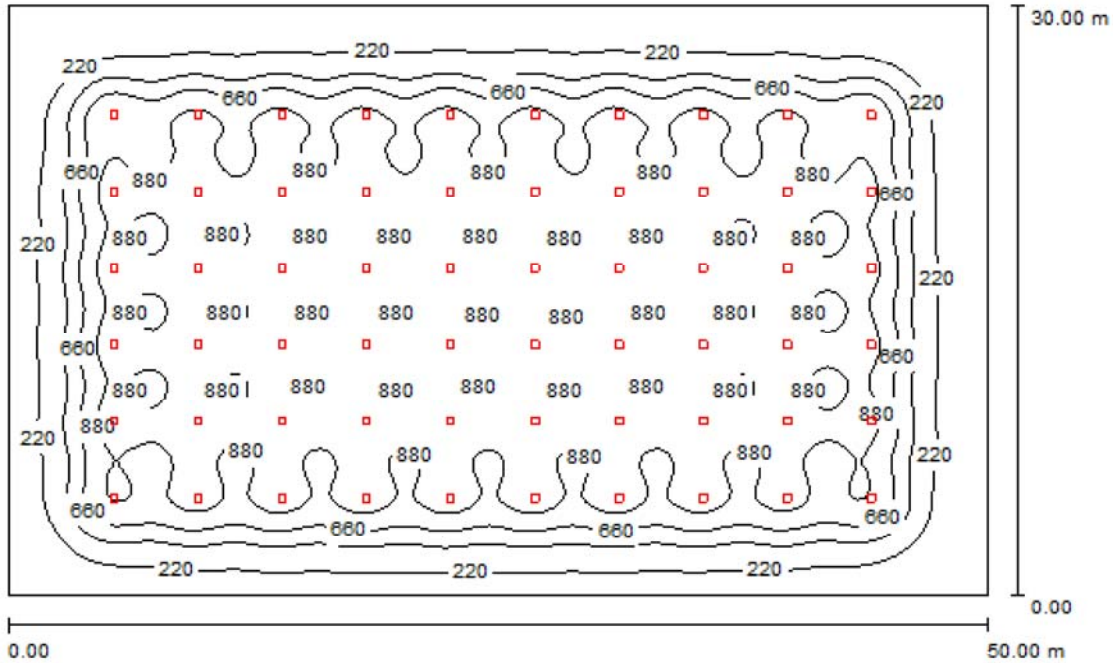
60 Pieces SHENZHEN SUN-LIGHT TECHNOLOGY CO.,
LTd HC-150W-45° HC-150W-45°
Article No.: HC-150W-45°
Luminaire Luminous Flux: 19185 lm
Luminaire Wattage: 149.0 W
Luminaire classification according to CIE: 98
CIE flux code: 91 98 100 98 101
Fitting: 1 x HC-150W-45° (Correction Factor
1.000).

See our luminaire
catalog for an image of
the luminaire.



Operator
Telephone
Fax
e-Mail

Room 1 / Summary



Height of Room: 7.000 m, Mounting Height: 7.000 m, Light loss factor: 0.80

Values in Lux, Scale 1:386

Surface	ρ [%]	E_{av} [lx]	E_{min} [lx]	E_{max} [lx]	u_0
Workplane	/	666	49	1102	0.073
Floor	20	662	54	1027	0.081
Ceiling	70	114	49	164	0.431
Walls (4)	50	99	54	172	/

Workplane:

Height: 0.850 m
Grid: 128 x 128 Points
Boundary Zone: 0.000 m

Luminaire Parts List

No.	Pieces	Designation (Correction Factor)	Φ [lm]	P [W]
1	60	SHENZHEN SUN-LIGHT TECHNOLOGY CO., LTd HC-150W-45° HC-150W-45° (1.000)	19185	149.0

Total: 1151076 8940.0

Specific connected load: $5.96 \text{ W/m}^2 = 0.89 \text{ W/m}^2/100 \text{ lx}$ (Ground area: 1500.00 m^2)

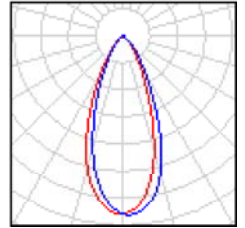


Operator
Telephone
Fax
e-Mail

Room 1 / Luminaire parts list

60 Pieces SHENZHEN SUN-LIGHT TECHNOLOGY CO.,
LTd HC-150W-45° HC-150W-45°
Article No.: HC-150W-45°
Luminaire Luminous Flux: 19185 lm
Luminaire Wattage: 149.0 W
Luminaire classification according to CIE: 98
CIE flux code: 91 98 100 98 101
Fitting: 1 x HC-150W-45° (Correction Factor
1.000).

See our luminaire
catalog for an image of
the luminaire.





Operator
Telephone
Fax
e-Mail

Room 1 / Floor plan

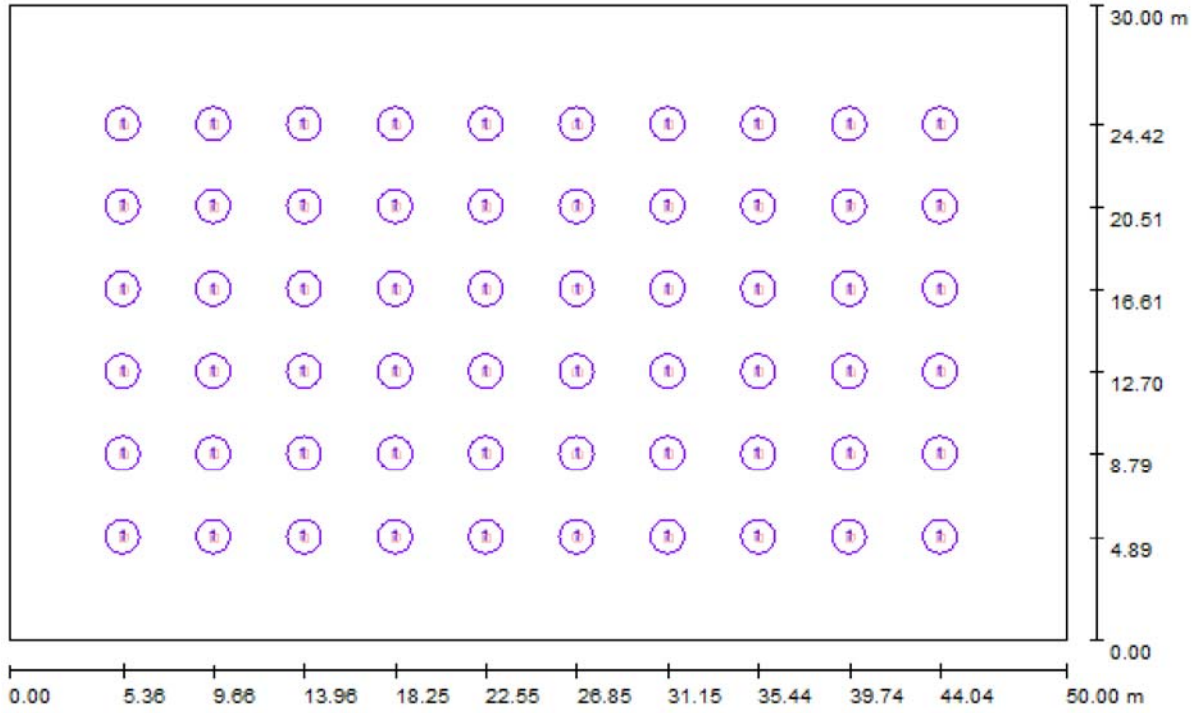


Scale 1 : 358



Operator
 Telephone
 Fax
 e-Mail

Room 1 / Luminaires (layout plan)



Scale 1 : 358

Luminaire Parts List

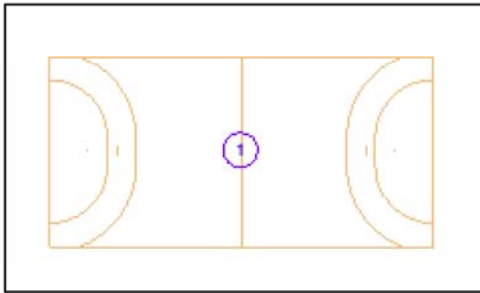
No.	Pieces	Designation
1	60	SHENZHEN SUN-LIGHT TECHNOLOGY CO., LTd HC-150W-45° HC-150W-45°



Operator
 Telephone
 Fax
 e-Mail

Room 1 / Sport Sites (Coordinates List)

Handball

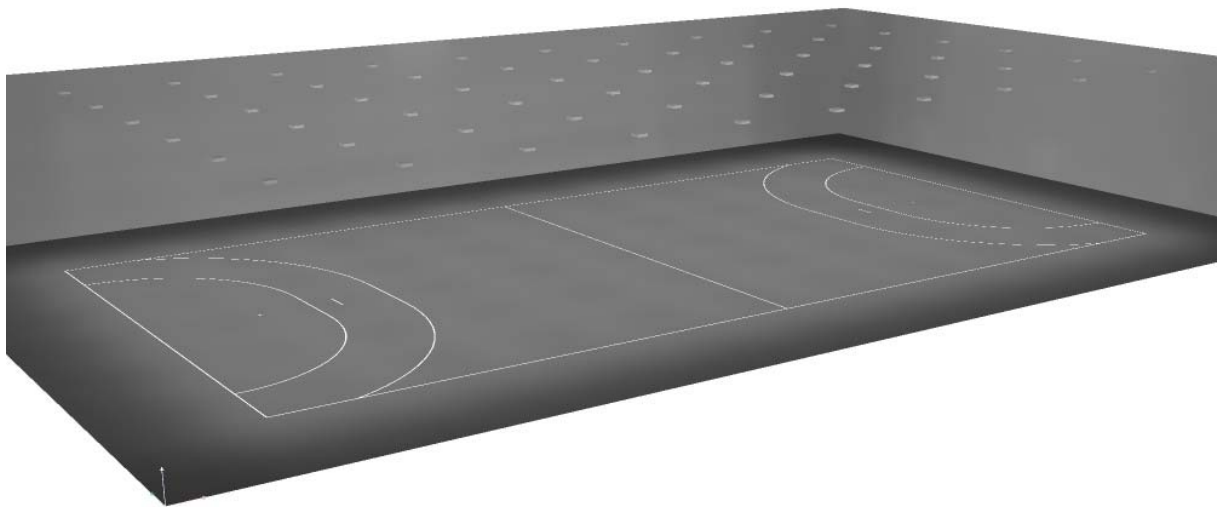


No.	Position [m]			Size Playing Area [m]		Size Total Area [m]		Rotation [°]		
	X	Y	Z	L	W	L	W	X	Y	Z
1	24.700	14.653	0.000	40.000	20.000	44.000	24.000	0.0	0.0	0.0



Operator
Telephone
Fax
e-Mail

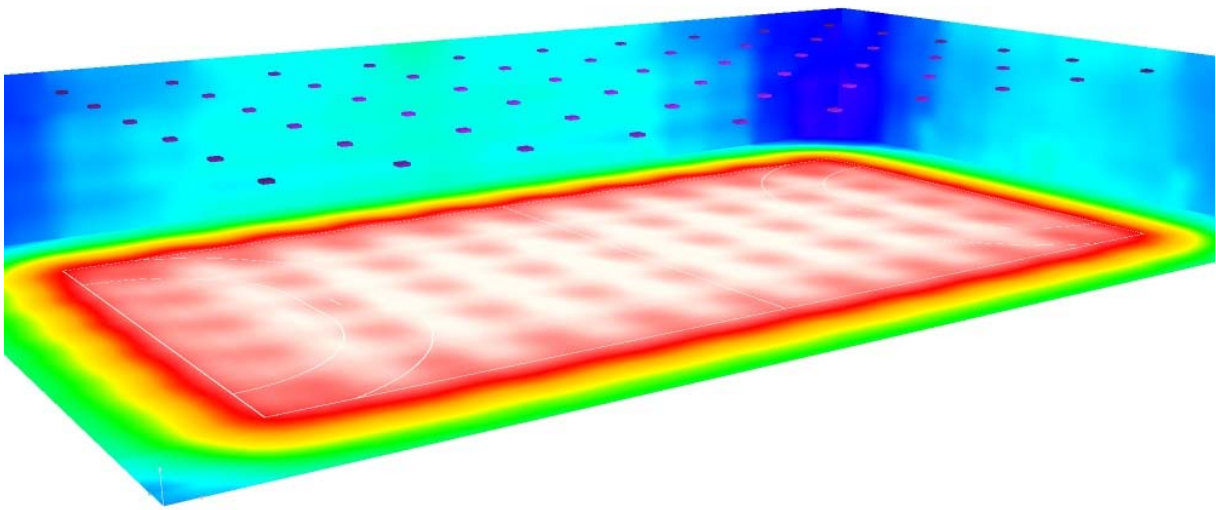
Room 1 / 3D Rendering





Operator
Telephone
Fax
e-Mail

Room 1 / False Color Rendering



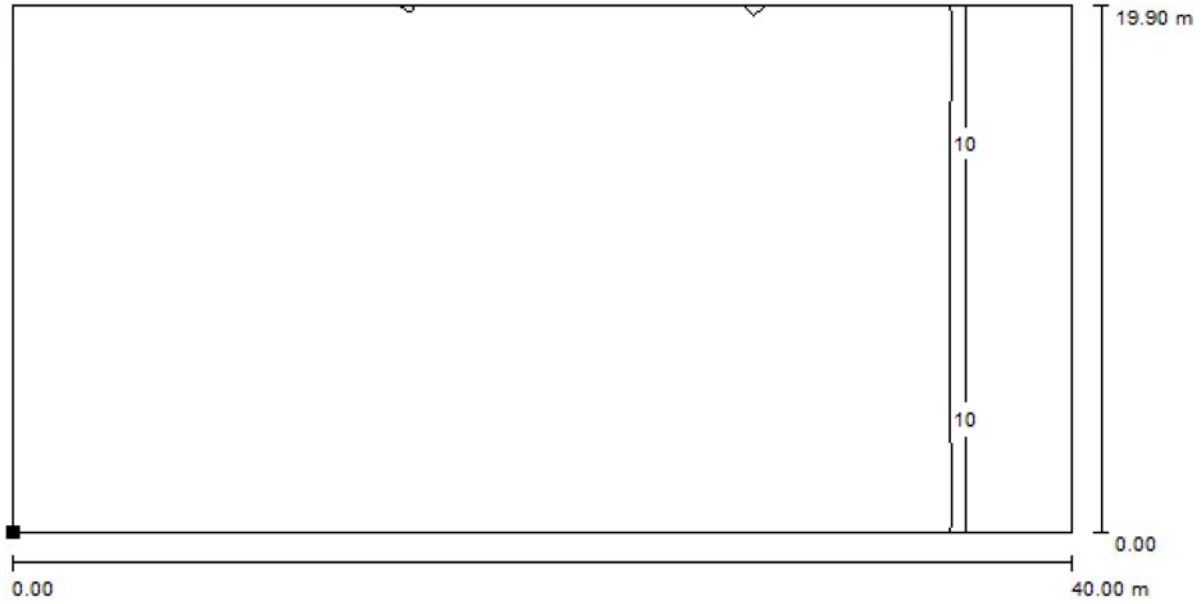
10 40 60 100 200 300 500 700 1000

lx



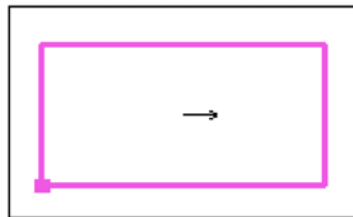
Operator
Telephone
Fax
e-Mail

Room 1 / UGR Calculation Area 1 / Isolines (UGR)



Scale 1 : 286

Position of surface in room:
Marked point:
(4.700 m, 4.703 m, 1.200 m)



Grid: 40 x 19 Points

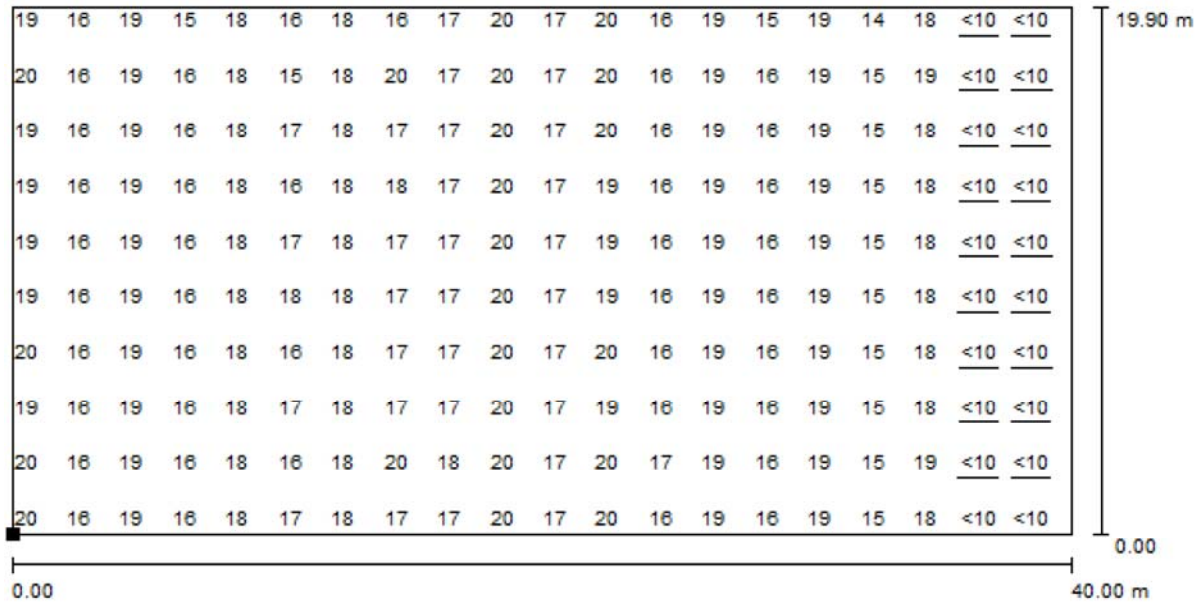
Min
/

Max
21



Operator
Telephone
Fax
e-Mail

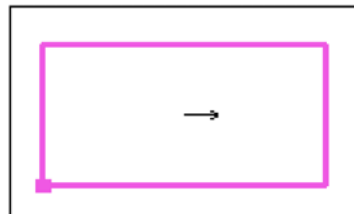
Room 1 / UGR Calculation Area 1 / Value Chart (UGR)



Scale 1 : 286

Not all calculated values could be displayed.

Position of surface in room:
Marked point:
(4.700 m, 4.703 m, 1.200 m)



Grid: 40 x 19 Points

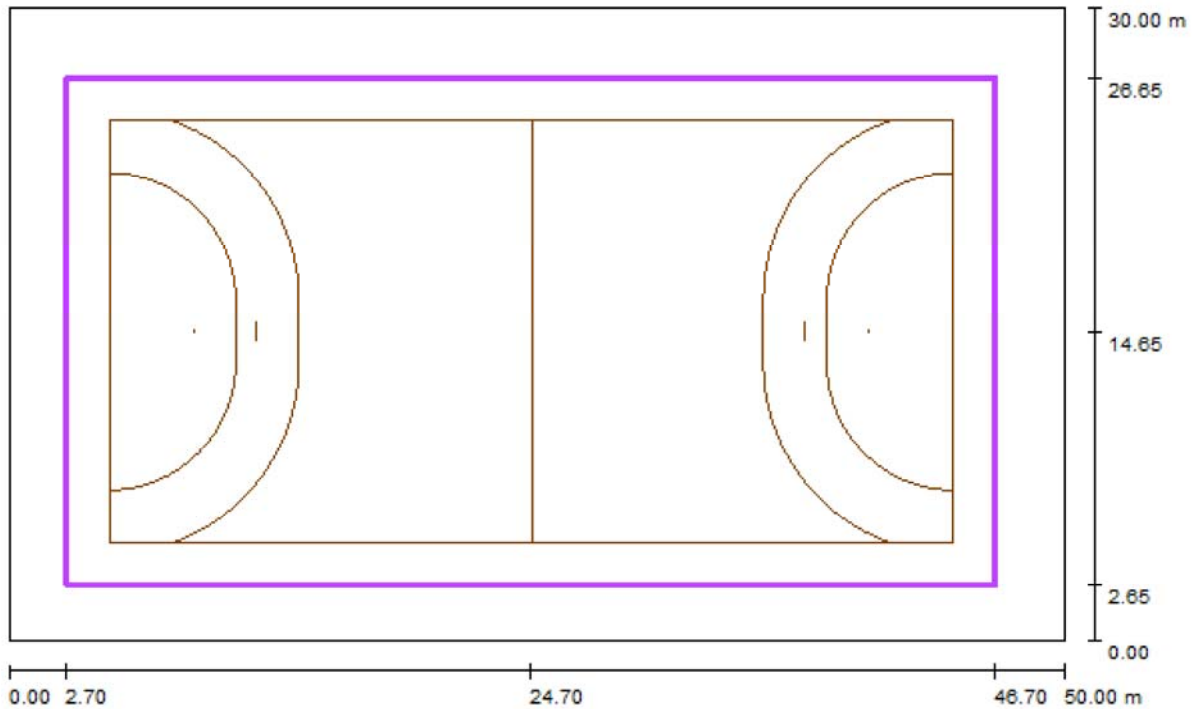
Min
/

Max
21



Operator
Telephone
Fax
e-Mail

Room 1 / Handball 1 Calculation Grid (TA) / Summary



Scale 1 : 358

Position: (24.700 m, 14.653 m, 0.000 m)
 Size: (44.000 m, 24.000 m)
 Rotation: (0.0°, 0.0°, 0.0°)
 Type: Normal, Grid: 15 x 9 Points
 Belongs to the following sport arena: Handball 1

Results overview

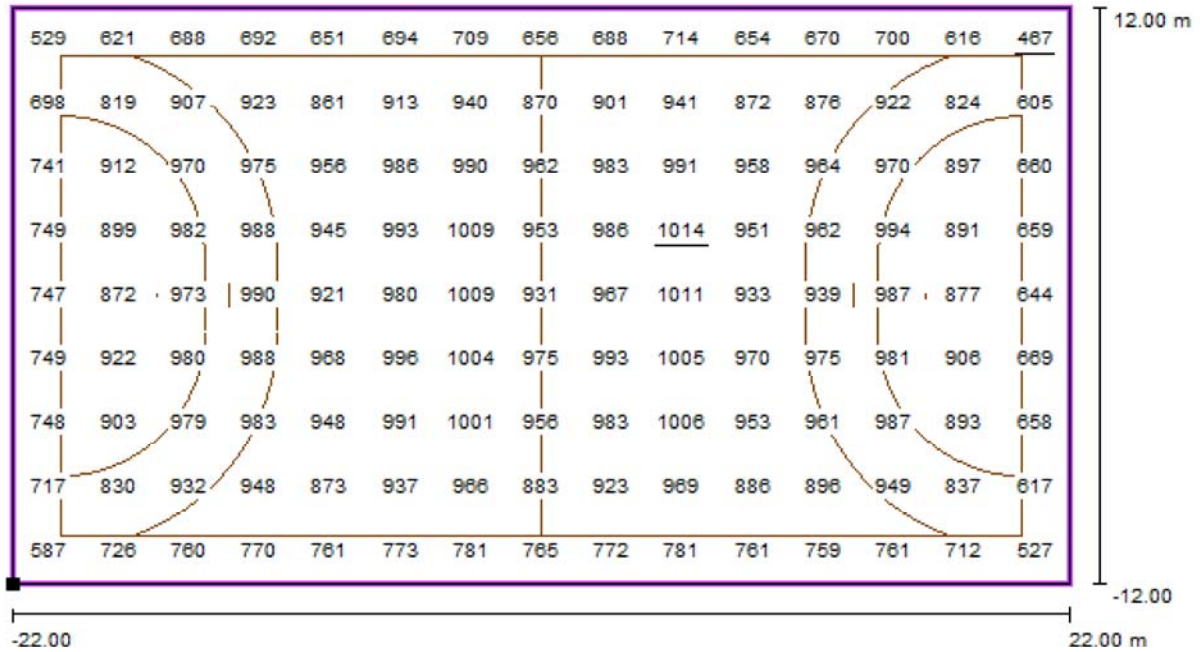
No.	Type	E_{av} [lx]	E_{min} [lx]	E_{max} [lx]	u0	E_{min} / E_{max}	$E_{h\ m} / E_m$	H [m]	Camera
1	perpendicular	863	467	1014	0.54	0.46	/	0.000	/

$E_{h\ m} / E_m$ = Relationship between middle horizontal and vertical illuminance, H = Measuring Height



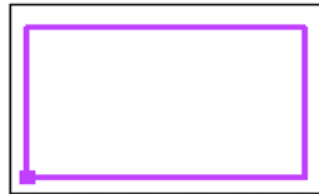
Operator
Telephone
Fax
e-Mail

Room 1 / Handball 1 Calculation Grid (TA) / Value Chart (E, Perpendicular)



Values in Lux, Scale 1 : 315

Position of surface in room:
Marked point: (2.700 m, 2.653 m,
0.000 m)



Grid: 15 x 9 Points

E_{av} [lx]
863

E_{min} [lx]
467

E_{max} [lx]
1014

u_0
0.54

E_{min} / E_{max}
0.46