

Operator
Telephone
Fax
e-Mail

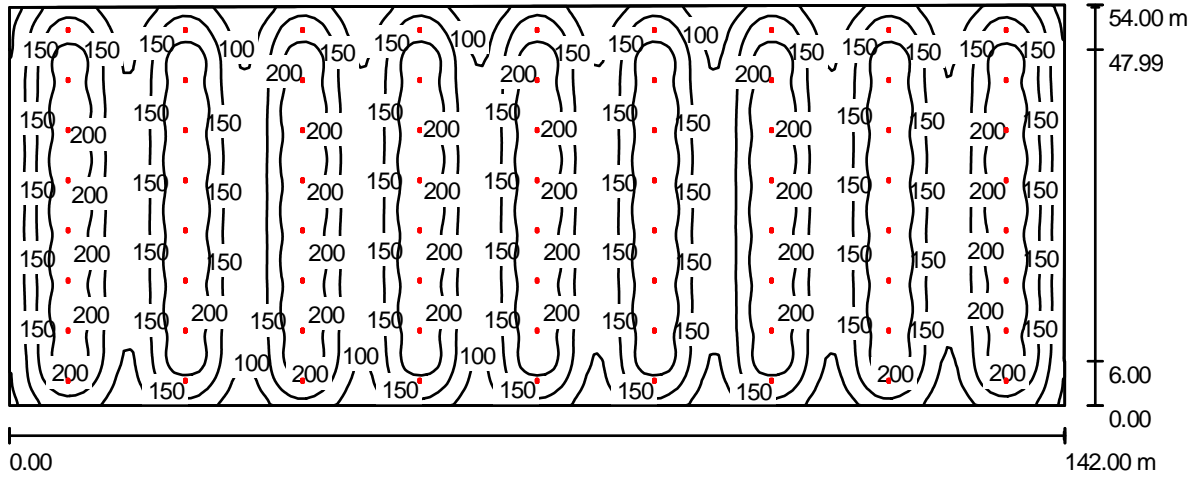
项目 1 / Luminaire parts list

72 Pieces XY-GK150WW-90A XY-GK150WW-90A
Article No.: XY-GK150WW-90A
Luminaire Luminous Flux: 23176 lm
Luminaire Wattage: 153.2 W
Luminaire classification according to CIE: 97
CIE flux code: 76 95 99 97 100
Fitting: 1 x User defined (Correction Factor
1.000).

See our luminaire
catalog for an image of
the luminaire.

Operator
Telephone
Fax
e-Mail

Building / Summary



Height of Room: 9.400 m, Mounting Height: 9.400 m, Maintenance factor: 0.80

Values in Lux, Scale 1:1016

Surface	r [%]	E _{av} [lx]	E _{min} [lx]	E _{max} [lx]	u0
Workplane	/	161	38	246	0.236
Floor	20	161	38	246	0.234
Ceiling	20	27	15	33	0.549
Walls (8)	20	48	11	158	/

Workplane:

Height: 0.000 m
Grid: 128 x 128 Points
Boundary Zone: 0.000 m

Luminaire Parts List

No.	Pieces	Designation (Correction Factor)	F [lm]	P [W]
1	72	XY-GK150WW-90A XY-GK150WW-90A (1.000)	23176	153.2
Total:			1668686	11030.4

Specific connected load: 1.44 W/m² = 0.90 W/m²/100 lx (Ground area: 7642.52 m²)

Operator
Telephone
Fax
e-Mail

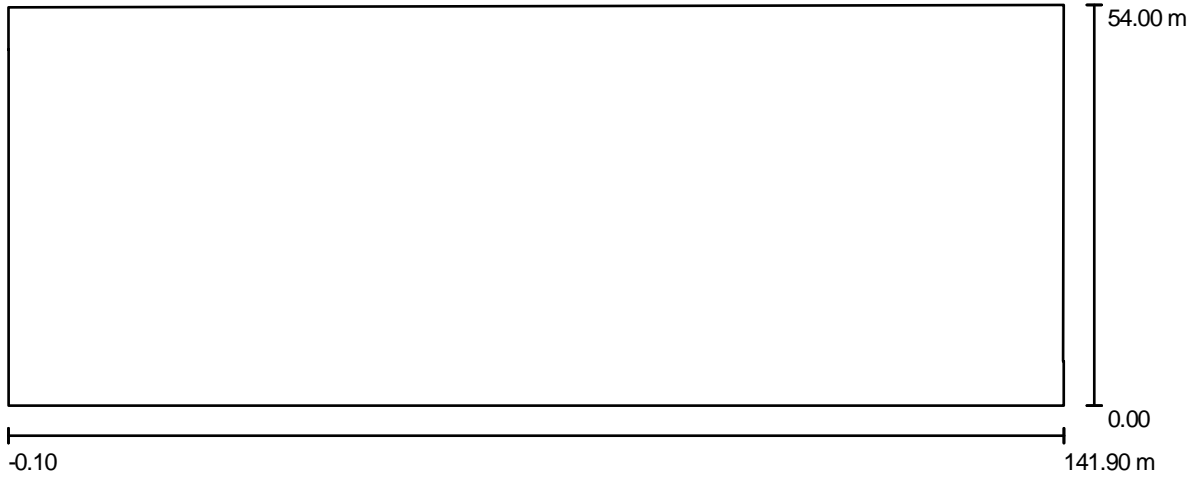
Building / Luminaire parts list

72 Pieces XY-GK150WW-90A XY-GK150WW-90A
Article No.: XY-GK150WW-90A
Luminaire Luminous Flux: 23176 lm
Luminaire Wattage: 153.2 W
Luminaire classification according to CIE: 97
CIE flux code: 76 95 99 97 100
Fitting: 1 x User defined (Correction Factor
1.000).

See our luminaire
catalog for an image of
the luminaire.

Operator
Telephone
Fax
e-Mail

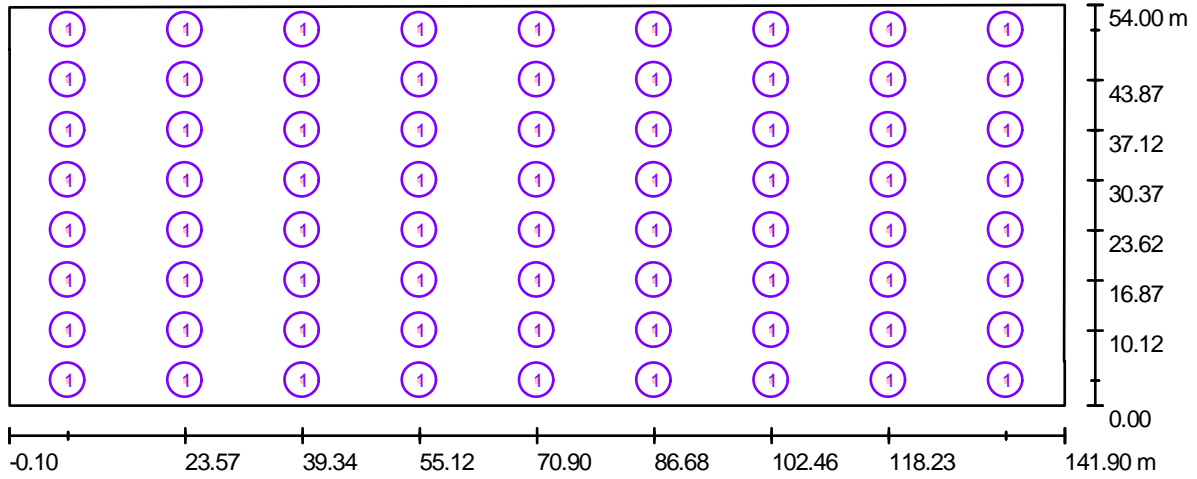
Building / Floor plan



Scale 1 : 1016

Operator
Telephone
Fax
e-Mail

Building / Luminaires (layout plan)



Scale 1 : 1016

Luminaire Parts List

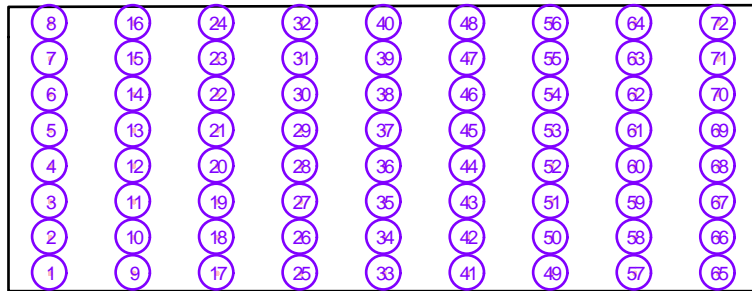
No.	Pieces	Designation
1	72	XY-GK150WW-90A XY-GK150WW-90A

Operator
Telephone
Fax
e-Mail

Building / Luminaires (coordinates list)

XY-GK150WW-90A XY-GK150WW-90A

23176 lm, 153.2 W, 1 x 1 x User defined (Correction Factor 1.000).



No.	Position [m]			Rotation [°]		
	X	Y	Z	X	Y	Z
1	7.789	3.375	9.400	0.0	0.0	90.0
2	7.789	10.125	9.400	0.0	0.0	90.0
3	7.789	16.875	9.400	0.0	0.0	90.0
4	7.789	23.625	9.400	0.0	0.0	90.0
5	7.789	30.375	9.400	0.0	0.0	90.0
6	7.789	37.125	9.400	0.0	0.0	90.0
7	7.789	43.875	9.400	0.0	0.0	90.0
8	7.789	50.625	9.400	0.0	0.0	90.0
9	23.567	3.375	9.400	0.0	0.0	90.0
10	23.567	10.125	9.400	0.0	0.0	90.0
11	23.567	16.875	9.400	0.0	0.0	90.0
12	23.567	23.625	9.400	0.0	0.0	90.0
13	23.567	30.375	9.400	0.0	0.0	90.0
14	23.567	37.125	9.400	0.0	0.0	90.0
15	23.567	43.875	9.400	0.0	0.0	90.0
16	23.567	50.625	9.400	0.0	0.0	90.0
17	39.344	3.375	9.400	0.0	0.0	90.0
18	39.344	10.125	9.400	0.0	0.0	90.0
19	39.344	16.875	9.400	0.0	0.0	90.0
20	39.344	23.625	9.400	0.0	0.0	90.0
21	39.344	30.375	9.400	0.0	0.0	90.0
22	39.344	37.125	9.400	0.0	0.0	90.0
23	39.344	43.875	9.400	0.0	0.0	90.0
24	39.344	50.625	9.400	0.0	0.0	90.0
25	55.122	3.375	9.400	0.0	0.0	90.0
26	55.122	10.125	9.400	0.0	0.0	90.0
27	55.122	16.875	9.400	0.0	0.0	90.0
28	55.122	23.625	9.400	0.0	0.0	90.0

Operator
Telephone
Fax
e-Mail

Building / Luminaires (coordinates list)

No.	Position [m]			Rotation [°]		
	X	Y	Z	X	Y	Z
29	55.122	30.375	9.400	0.0	0.0	90.0
30	55.122	37.125	9.400	0.0	0.0	90.0
31	55.122	43.875	9.400	0.0	0.0	90.0
32	55.122	50.625	9.400	0.0	0.0	90.0
33	70.900	3.375	9.400	0.0	0.0	90.0
34	70.900	10.125	9.400	0.0	0.0	90.0
35	70.900	16.875	9.400	0.0	0.0	90.0
36	70.900	23.625	9.400	0.0	0.0	90.0
37	70.900	30.375	9.400	0.0	0.0	90.0
38	70.900	37.125	9.400	0.0	0.0	90.0
39	70.900	43.875	9.400	0.0	0.0	90.0
40	70.900	50.625	9.400	0.0	0.0	90.0
41	86.678	3.375	9.400	0.0	0.0	90.0
42	86.678	10.125	9.400	0.0	0.0	90.0
43	86.678	16.875	9.400	0.0	0.0	90.0
44	86.678	23.625	9.400	0.0	0.0	90.0
45	86.678	30.375	9.400	0.0	0.0	90.0
46	86.678	37.125	9.400	0.0	0.0	90.0
47	86.678	43.875	9.400	0.0	0.0	90.0
48	86.678	50.625	9.400	0.0	0.0	90.0
49	102.456	3.375	9.400	0.0	0.0	90.0
50	102.456	10.125	9.400	0.0	0.0	90.0
51	102.456	16.875	9.400	0.0	0.0	90.0
52	102.456	23.625	9.400	0.0	0.0	90.0
53	102.456	30.375	9.400	0.0	0.0	90.0
54	102.456	37.125	9.400	0.0	0.0	90.0
55	102.456	43.875	9.400	0.0	0.0	90.0
56	102.456	50.625	9.400	0.0	0.0	90.0
57	118.233	3.375	9.400	0.0	0.0	90.0
58	118.233	10.125	9.400	0.0	0.0	90.0
59	118.233	16.875	9.400	0.0	0.0	90.0
60	118.233	23.625	9.400	0.0	0.0	90.0
61	118.233	30.375	9.400	0.0	0.0	90.0
62	118.233	37.125	9.400	0.0	0.0	90.0
63	118.233	43.875	9.400	0.0	0.0	90.0
64	118.233	50.625	9.400	0.0	0.0	90.0
65	134.011	3.375	9.400	0.0	0.0	90.0
66	134.011	10.125	9.400	0.0	0.0	90.0

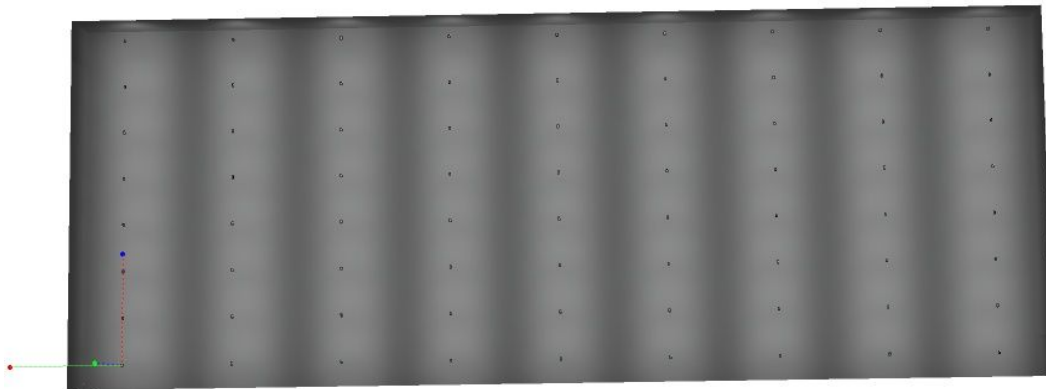
Operator
Telephone
Fax
e-Mail

Building / Luminaires (coordinates list)

No.	Position [m]			Rotation [°]		
	X	Y	Z	X	Y	Z
67	134.011	16.875	9.400	0.0	0.0	90.0
68	134.011	23.625	9.400	0.0	0.0	90.0
69	134.011	30.375	9.400	0.0	0.0	90.0
70	134.011	37.125	9.400	0.0	0.0	90.0
71	134.011	43.875	9.400	0.0	0.0	90.0
72	134.011	50.625	9.400	0.0	0.0	90.0

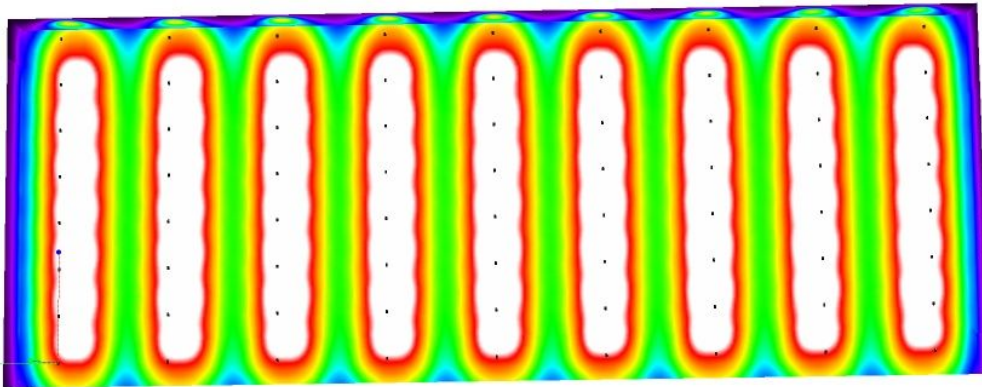
Operator
Telephone
Fax
e-Mail

Building / 3D Rendering



Operator
Telephone
Fax
e-Mail

Building / False Colour Rendering

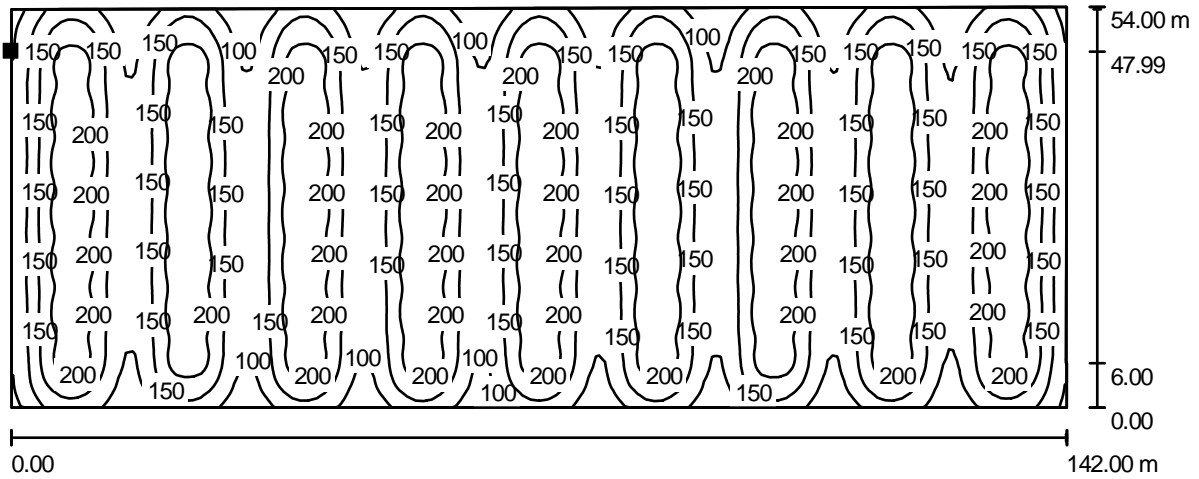


8 30 50 80 100 130 150 180 200

lx

Operator
Telephone
Fax
e-Mail

Building / Floor / Isolines (E)



Values in Lux, Scale 1 : 1016

Position of surface in room:
Marked point:
(-0.081 m, 47.991 m, 0.000 m)

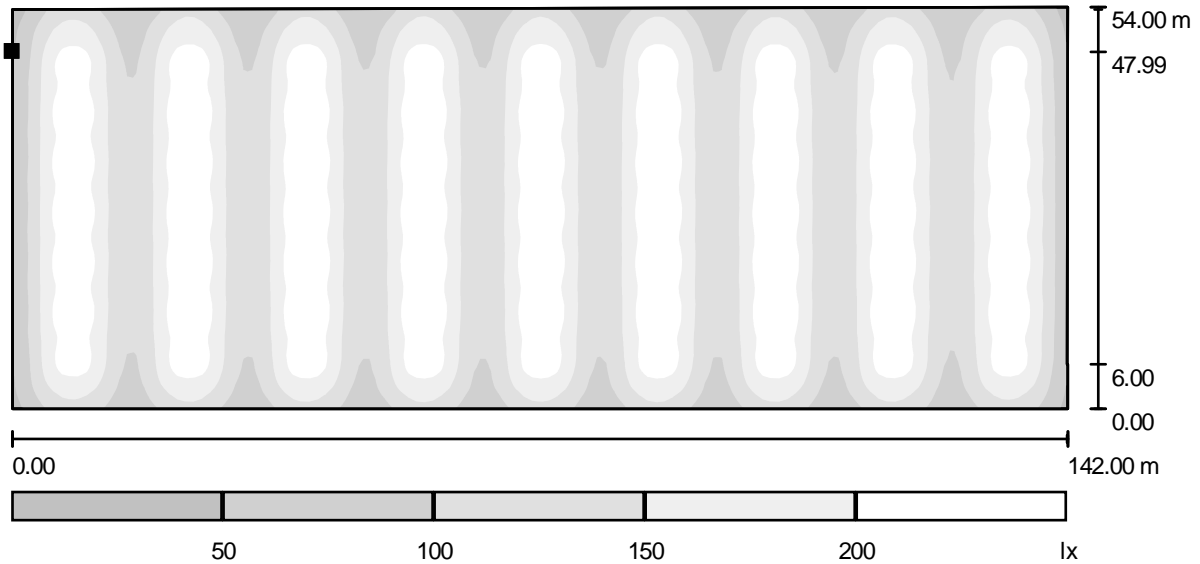


Grid: 128 x 128 Points

E_{av} [lx]	E_{min} [lx]	E_{max} [lx]	u0	E_{min} / E_{max}
161	38	246	0.234	0.152

Operator
Telephone
Fax
e-Mail

Building / Floor / Greyscale (E)



Scale 1 : 1016

Position of surface in room:
Marked point:
(-0.081 m, 47.991 m, 0.000 m)



Grid: 128 x 128 Points

E_{av} [lx]
161

E_{min} [lx]
38

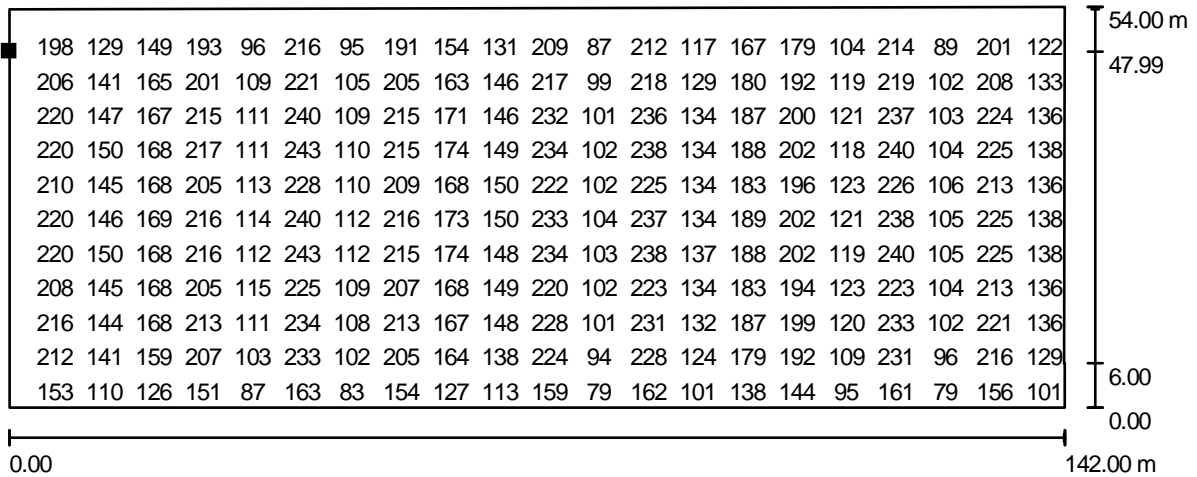
E_{max} [lx]
246

u0
0.234

E_{min} / E_{max}
0.152

Operator
Telephone
Fax
e-Mail

Building / Floor / Value Chart (E)



Values in Lux, Scale 1 : 1016

Not all calculated values could be displayed.

Position of surface in room:
Marked point:
(-0.081 m, 47.991 m, 0.000 m)



Grid: 128 x 128 Points

E_{av} [lx]	E_{min} [lx]	E_{max} [lx]	u0	E_{min} / E_{max}
161	38	246	0.234	0.152